



JAM FREE LATCHES WITH USER-FRIENDLY LEVERAGE OPENING MECHANISM (from 3818 to 13513 mod.)

MANUAL PRESSURE RELEASE VALVE ALLOWS EFFICIENT PURGING EVEN IN DUSTY ENVIRONMENTS. THE INTERNAL STOP RING PREVENTS VALVE FROM BEING EXTRACTED COMPLETELY

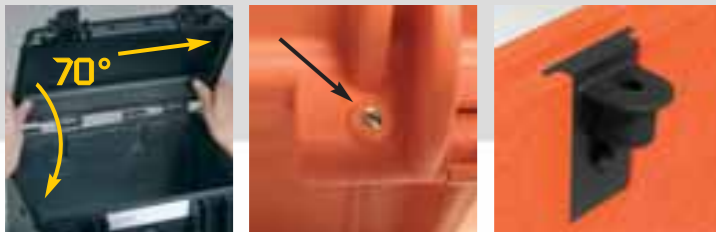
STANDARD MODELS AVAILABLE EMPTY OR WITH LAYERS OF PRECUBED FOAM IN THE BOTTOM AND CONVOLUTED FOAM IN THE LID. CUSTOM FOAMS AVAILABLE ON DEMAND



PADDED DIVIDER BAGS AVAILABLE IN MOST OF THE MODELS

THICKER STRUCTURAL FOAM POLYPROPYLENE WALLS GUARANTEE SUPERIOR PERFORMANCE IN EXTREME ENVIRONMENTS

CERTAIN MODELS ALLOW A SHOULDER STRAP, OPTIONAL KIT, TO BE MOUNTED. AVAILABLE FOR MODELS 1908, 1913, 2209, 2214, 4412, 4419, 5117, 11413, 13513.



BY RELEASING THE SCREW LID BECOMES SET TO SLIDE-OFF WHEN OPENED AT 70°.

RELEASING SCREW DETAIL. AVAILABLE ON MODELS 2712, 2717, 3317, 4412, 4419, 5117, 5122.

ALL CASES ARE PROVIDED WITH INTERNAL SLOTS FOR OPTIONAL "PANEL MOUNTING BRACKETS" OR "PANEL MOUNTING RINGS"

**EXPLORER CASES by GT LINE s.r.l.**  
Via del Lavoro, 50/52 - 40056 Crespellano (Bo) - Italy  
Tel. +39 051 65041 - Fax +39 051 734925  
www.explorercases.com - salesinternational@gtline.com



Mini Cat. Explorer GB - Ed. 2 - 12/06 - 10/000



**OUR SUPERIOR FEATURES:**

- Stronger case grants better protection of the interior
- Resistant to chemicals, water, humidity, dust
- Resistant to harsh temperatures
- Jam-free purge valve and latches
- Recommended for professional applications
- 100% made in Italy: Italian design and proven functionality
- First to achieve the new military standard qualifications
- Recognized as the most versatile case to customize
- Widest choice of accessories to customize your experience
- Incorporate a number of patented innovations

More information on [www.explorercases.com](http://www.explorercases.com)



**OUR GUARANTEE:**

"We want you to count on Explorer Cases as the most reliable resource to carry your valuable equipment in the harshest environments.

That's why we guarantee FOREVER our cases against breakage of materials and workmanship that could affect the integrity of what you carry inside.

After all, it is not by coincidence that all of our unbreakable cases have met the most rigorous military standard qualifications and are now so popular in extreme environments, no matter what human being, animal or fish you come across in your life journey."

See full details on [www.explorercases.com](http://www.explorercases.com)

**CERTIFICATIONS**

- IP67 Waterproof, dustproof
- Defence Standard 81-41 Level J
- STANAG 4280 (edition 2)
- Conformity with the Directive 2002/95/EC

\* Maximum weight capacity when contents are evenly distributed that maintains buoyancy level just below the lid closure line.



- Shoulder kit available on demand

1908.B E □ (empty) 1908.B ■ (w/foam)  
1908.O E □ (empty) 1908.O ■ (w/foam)  
1908.G E □ (empty) 1908.G ■ (w/foam)  
Int. dim.: 190x125x85 (20+65) mm  
7 1/2 x 4 15/16 x 3 3/8 (13/16 + 2 9/16) in.  
Ext. dim.: 216x180x102 mm - 8 1/2 x 7 1/16 x 4 in.  
Weight: (empty) 0,70 Kg - 1.54 Lbs  
Volume: (litres) 2,0 - Buoyancy: (Kg.max\*) 1,4 (Lbs/max\*) 3.08



- Shoulder kit available on demand

1913.B E □ (empty) 1913.B ■ (w/foam)  
1913.O E □ (empty) 1913.O ■ (w/foam)  
1913.G E □ (empty) 1913.G ■ (w/foam)  
Int. dim.: 190x125x135 (20+115) mm  
7 1/2 x 4 15/16 x 5 5/16 (13/16 + 4 1/2) in.  
Ext. dim.: 216x180x152 mm - 8 1/2 x 7 1/16 x 6 in.  
Weight: (empty) 0,85 Kg - 1.87 Lbs  
Volume: (litres) 3,2 - Buoyancy: (Kg.max\*) 2,4 (Lbs/max\*) 5.29



- Shoulder kit available on demand

2209.B E □ (empty) 2209.B ■ (w/foam)  
2209.O E □ (empty) 2209.O ■ (w/foam)  
2209.G E □ (empty) 2209.G ■ (w/foam)  
Int. dim.: 220x160x95 (20+75) mm  
8 11/16 x 6 5/16 x 3 3/4 (13/16 + 2 15/16) in.  
Ext. dim.: 246x215x112 mm - 9 11/16 x 8 7/16 x 4 7/16 in.  
Weight: (empty) 0,88 Kg - 1.94 Lbs  
Volume: (litres) 3,3 - Buoyancy: (Kg.max\*) 2,3 (Lbs/max\*) 5.07



- Shoulder kit available on demand

2214.B E □ (empty) 2214.B ■ (w/foam)  
2214.O E □ (empty) 2214.O ■ (w/foam)  
2214.G E □ (empty) 2214.G ■ (w/foam)  
Int. dim.: 220x160x145 (20+125) mm  
8 11/16 x 6 5/16 x 5 11/16 (13/16 + 4 15/16) in.  
Ext. dim.: 246x215x162 mm - 9 11/16 x 8 7/16 x 6 3/8 in.  
Weight: (empty) 1,16 Kg - 2.56 Lbs  
Volume: (litres) 5,1 - Buoyancy: (Kg.max\*) 3,9 (Lbs/max\*) 8.59



- Lid can be set to slide-off

2712.B E □ (empty) 2712.B ■ (w/foam)  
2712.O E □ (empty) 2712.O ■ (w/foam)  
2712.G E □ (empty) 2712.G ■ (w/foam)  
Int. dim.: 276x200x120 (35+85) mm  
10 7/8 x 7 7/8 x 4 3/4 (1 3/8 + 3 3/8) in.  
Ext. dim.: 305x270x144 mm - 12 x 10 5/8 x 5 11/16 in.  
Weight: (empty) 1,62 Kg - 3.57 Lbs  
Volume: (litres) 6,6 - Buoyancy: (Kg.max\*) 4,2 (Lbs/max\*) 9.25



- Lid can be set to slide-off

2717.B E □ (empty) 2717.B ■ (w/foam)  
2717.O E □ (empty) 2717.O ■ (w/foam)  
2717.G E □ (empty) 2717.G ■ (w/foam)  
Int. dim.: 276x200x170 (35+135) mm  
10 7/8 x 7 7/8 x 6 11/16 (1 3/8 + 5 5/16) in.  
Ext. dim.: 305x270x194 mm - 12 x 10 5/8 x 7 5/8 in.  
Weight: (empty) 1,93 Kg - 4.25 Lbs  
Volume: (litres) 9,3 - Buoyancy: (Kg.max\*) 6,7 (Lbs/max\*) 14.77



- Lid can be set to slide-off

3317.B E □ (empty) 3317.B ■ (w/foam)  
3317.O E □ (empty) 3317.O ■ (w/foam)  
3317.G E □ (empty) 3317.G ■ (w/foam)  
Int. dim.: 330x234x170 (68+102) mm  
13 x 9 3/16 x 6 11/16 (2 11/16 + 4) in.  
Ext. dim.: 360x304x194 mm - 14 3/16 x 11 15/16 x 7 5/8 in.  
Weight: (empty) 2,29 Kg - 5.04 Lbs  
Volume: (litres) 13,1 - Buoyancy: (Kg.max\*) 7,0 (Lbs/max\*) 15.43



3818.B E □ (empty) 3818.B ■ (w/foam)  
3818.O E □ (empty) 3818.O ■ (w/foam)  
3818.G E □ (empty) 3818.G ■ (w/foam)  
Int. dim.: 380x270x180 (45+135) mm  
14 15/16 x 10 5/8 x 7 1/16 (1 3/4 + 5 5/16) in.  
Ext. dim.: 410x340x205 mm - 16 1/8 x 13 3/8 x 8 1/16 in.  
Weight: (empty) 3,14 Kg - 6.92 Lbs  
Volume: (litres) 18,4 - Buoyancy: (Kg.max\*) 12,4 (Lbs/max\*) 27.33

GB



# BUILT STRONGER TO LAST LONGER!



More information on features and accessories available on [www.explorercases.com](http://www.explorercases.com)



- Lid can be set to slide-off
- Shoulder kit available on demand
- Soft grip rubber handle

4412.B E (empty) 4412.B (w/foam)  
 4412.O E (empty) 4412.O (w/foam)  
 4412.G E (empty) 4412.G (w/foam)  
 4412.C (BAG-PC44) 4412.C (BAG-PC44)  
 Int. dim.: 445x345x125 (47+78) mm  
 17 1/2 x 13 9/16 x 4 15/16 (1 7/8 + 3 1/16) in.  
 Ext. dim.: 474x415x149 mm - 18 11/16 x 16 5/16 x 5 7/8 in.  
 Weight: (empty) 3,40 Kg - 7.49 Lbs  
 Volume: (litres) 19,2 - Buoyancy: (Kg.max\*) 10,7 (Lbs/max\*) 23.58



- Lid can be set to slide-off
- Shoulder kit available on demand
- Soft grip rubber handle

4419.B E (empty) 4419.B (w/foam)  
 4419.O E (empty) 4419.O (w/foam)  
 4419.G E (empty) 4419.G (w/foam)  
 Int. dim.: 445x345x190 (47+143) mm  
 17 1/2 x 13 9/16 x 7 1/2 (1 7/8 + 5 5/8) in.  
 Ext. dim.: 474x415x214 mm - 18 11/16 x 16 5/16 x 8 7/16 in.  
 Weight: (empty) 4,00 Kg - 8.81 Lbs  
 Volume: (litres) 29,2 - Buoyancy: (Kg.max\*) 19,7 (Lbs/max\*) 43.43



- Lid can be set to slide-off
- Shoulder kit available on demand
- Soft grip rubber handle

4820.B E (empty) 4820.B (w/foam)  
 4820.O E (empty) 4820.O (w/foam)  
 4820.G E (empty) 4820.G (w/foam)  
 Int. dim.: 480x370x205 (50+155) mm  
 18 7/8 x 14 9/16 x 8 1/16 (1 15/16 + x6 1/8) in.  
 Ext. dim.: 520x435x230 mm - 20 1/2 x 17 1/8 x 9 1/16 in.  
 Weight: (empty) 4,64 Kg - 10.22 Lbs  
 Volume: (litres) 35,5 - Buoyancy: (Kg.max\*) 24,7 (Lbs/max\*) 54.45



- Lid can be set to slide-off
- Shoulder kit available on demand
- Soft grip rubber handle

5117.B E (empty) 5117.B (w/foam)  
 5117.O E (empty) 5117.O (w/foam)  
 5117.G E (empty) 5117.G (w/foam)  
 Int. dim.: 517x277x173 (50+123) mm  
 20 3/8 x 10 7/8 x 6 13/16 (1 15/16 + 4 13/16) in.  
 Ext. dim.: 546x347x197 mm - 21 1/2 x 13 11/16 x 7 3/4 in.  
 Weight: (empty) 3,80 Kg - 8.37 Lbs  
 Volume: (litres) 24,7 - Buoyancy: (Kg.max\*) 15,8 (Lbs/max\*) 34.83



- Lid can be set to slide-off
- Soft grip rubber handle

5122.B E (empty) 5122.B (w/foam)  
 5122.O E (empty) 5122.O (w/foam)  
 5122.G E (empty) 5122.G (w/foam)  
 Int. dim.: 580x440x220 (60+160) mm  
 22 13/16 x 17 5/16 x 8 11/16 (2 3/8 + 6 5/16) in.  
 Ext. dim.: 650x510x242 mm - 25 9/16 x 20 1/16 x 9 1/2 in.  
 Weight: (empty) 6,96 Kg - 15.34 Lbs  
 Volume: (litres) 56,1 - Buoyancy: (Kg.max\*) 36,7 (Lbs/max\*) 80.90



- Side handles

5822.B E (empty) 5822.B (w/foam)  
 5822.O E (empty) 5822.O (w/foam)  
 5822.G E (empty) 5822.G (w/foam)  
 Int. dim.: 580x440x220 (60+160) mm  
 22 13/16 x 17 5/16 x 8 11/16 (2 3/8 + 6 5/16) in.  
 Ext. dim.: 650x510x242 mm - 25 9/16 x 20 1/16 x 9 1/2 in.  
 Weight: (empty) 6,96 Kg - 15.34 Lbs  
 Volume: (litres) 56,1 - Buoyancy: (Kg.max\*) 36,7 (Lbs/max\*) 80.90



- Side handles
- Wheels
- telescopic handle

5833.B E (empty) 5833.B (w/foam)  
 5833.O E (empty) 5833.O (w/foam)  
 5833.G E (empty) 5833.G (w/foam)  
 Int. dim.: 580x440x330 (60+270) mm  
 22 13/16 x 17 5/16 x 13 (2 3/8 + 10 5/8) in.  
 Ext. dim.: 682x510x355 mm - 26 7/8 x 20 1/16 x 14 in.  
 Weight: (empty) 9,55 Kg - 21.05 Lbs  
 Volume: (litres) 84,2 - Buoyancy: (Kg.max\*) 62,0 (Lbs/max\*) 136.68



- Side handles
- Wheels
- Large front handle
- Retractable handle

7630.B E (empty) 7630.B (w/foam)  
 7630.O E (empty) 7630.O (w/foam)  
 7630.G E (empty) 7630.G (w/foam)  
 Int. dim.: 765x485x305 (60+245) mm  
 30 1/8 x 19 1/8 x 12 (2 3/8 + 9 5/8) in.  
 Ext. dim.: 860x560x330 mm - 33 7/8 x 22 1/16 x 13 in.  
 Weight: (empty) 11,20 Kg - 24.69 Lbs  
 Volume: (litres) 113,1 - Buoyancy: (Kg.max\*) 81,8 (Lbs/max\*) 180.33



- Side handles
- Wheels

7641.B E (empty) 7641.B (w/foam)  
 7641.O E (empty) 7641.O (w/foam)  
 7641.G E (empty) 7641.G (w/foam)  
 Int. dim.: 765x485x415 (60+355) mm  
 30 1/8 x 19 1/8 x 16 5/16 (2 3/8 + 14) in.  
 Ext. dim.: 860x560x435 mm - 33 7/8 x 22 1/16 x 17 1/8 in.  
 Weight: (empty) 12,07 Kg - 26.60 Lbs  
 Volume: (litres) 153,9 - Buoyancy: (Kg.max\*) 118,5 (Lbs/max\*) 261.24



- Side handles
- Wheels
- Large front handle
- Shoulder kit available on demand

11413.B E (empty) 11413.B (w/foam)  
 11413.G E (empty) 11413.G (w/foam)  
 Int. dim.: 1136x350x135 (42+93) mm  
 44 3/4 x 13 3/4 x 5 5/16 (1 5/8 + 3 11/16) in.  
 Ext. dim.: 1189x415x159 mm - 46 13/16 x 16 5/16 x 6 1/4 in.  
 Weight: (empty) 7,80 Kg - 17.19 Lbs  
 Volume: (litres) 53,7 - Buoyancy: (Kg.max\*) 33,3 (Lbs/max\*) 73.41

**NEW**



- Side handles
- Wheels
- Large front handle
- Shoulder kit available on demand

13513.B E (empty) 13513.B (w/foam)  
 13513.G E (empty) 13513.G (w/foam)

Int. dim.: 1350x350x135 (42+93) mm  
 53 1/8 x 13 3/4 x 5 5/16 (1 5/8 + 3 11/16) in.  
 Ext. dim.: 1410x415x159 mm - 55 1/2 x 16 5/16 x 6 1/4 in.  
 Weight: (empty) 8,70 Kg - 19.18 Lbs  
 Volume: (litres) 63,7 - Buoyancy: (Kg.max\*) 39,5 (Lbs/max\*) 87.08



- Side handles
- Wheels
- Large front handle

13527.B E (empty) 13527.B (w/foam)  
 13527.G E (empty) 13527.G (w/foam)

Int. dim.: 1350x350x272 (42+230) mm  
 53 1/8 x 13 3/4 x 10 11/16 (1 5/8 + 9 1/16) in.  
 Ext. dim.: 1430x415x296 mm - 56 5/16 x 16 5/16 x 11 5/8 in.  
 Weight: (empty) 11,70 Kg - 25.79 Lbs  
 Volume: (litres) 128,5 - Buoyancy: (Kg.max\*) 97,5 (Lbs/max\*) 214.95

**NEW**